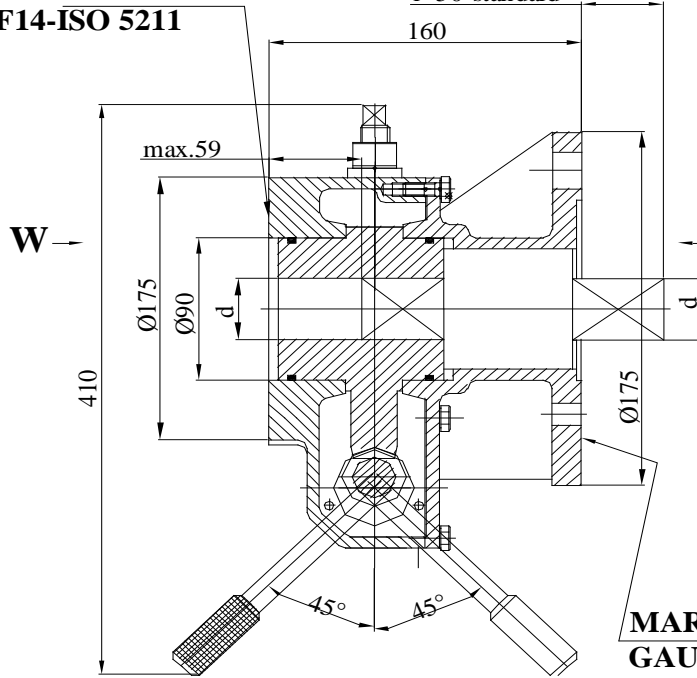


# REDUCTOR MANUAL DEBRAIABIL PENTRU ARMATURI "SFERT DE TURA"-ACTIONARE RMD 125

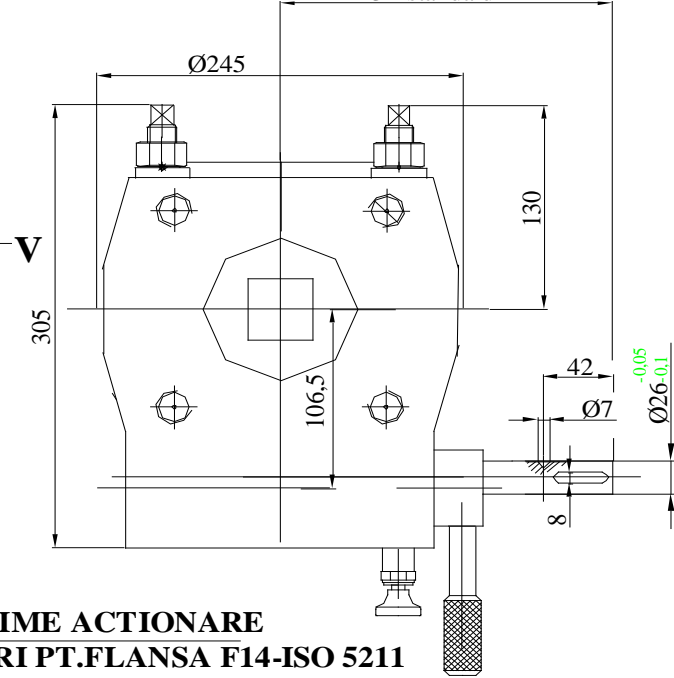


**FLANSA CUPLARE VANA  
F14-ISO 5211**

$l=50$ -standard



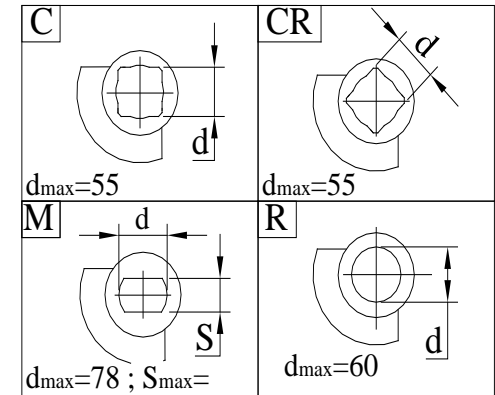
$L=234$ -standard



**MARIME ACTIONARE  
GAURI PT.FLANSA F14-ISO 5211**

Fisa nr.	2298
Data	04.08.2010

**Vedere "V"; "W"  
Forma cuplare Pozitia "inchis"**

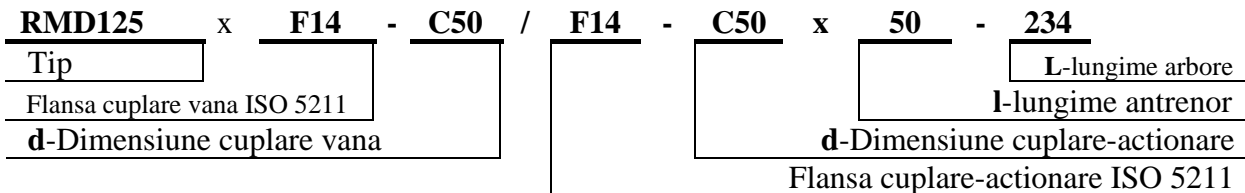


Roata de mana,aluminiu -ø350-standard  
Roata de mana,sudata: A400; A500; A600  
*Se comanda separat!*

**CARACTERISTICI TEHNICE:**

- Moment iesire.....2500 Nm
- Moment intrare.....110 Nm
- Raport.....76
- Cursa unghiulara,iesire.....90 5
- Nr.rotatii,roata de mana pt.o cursa completa.....19

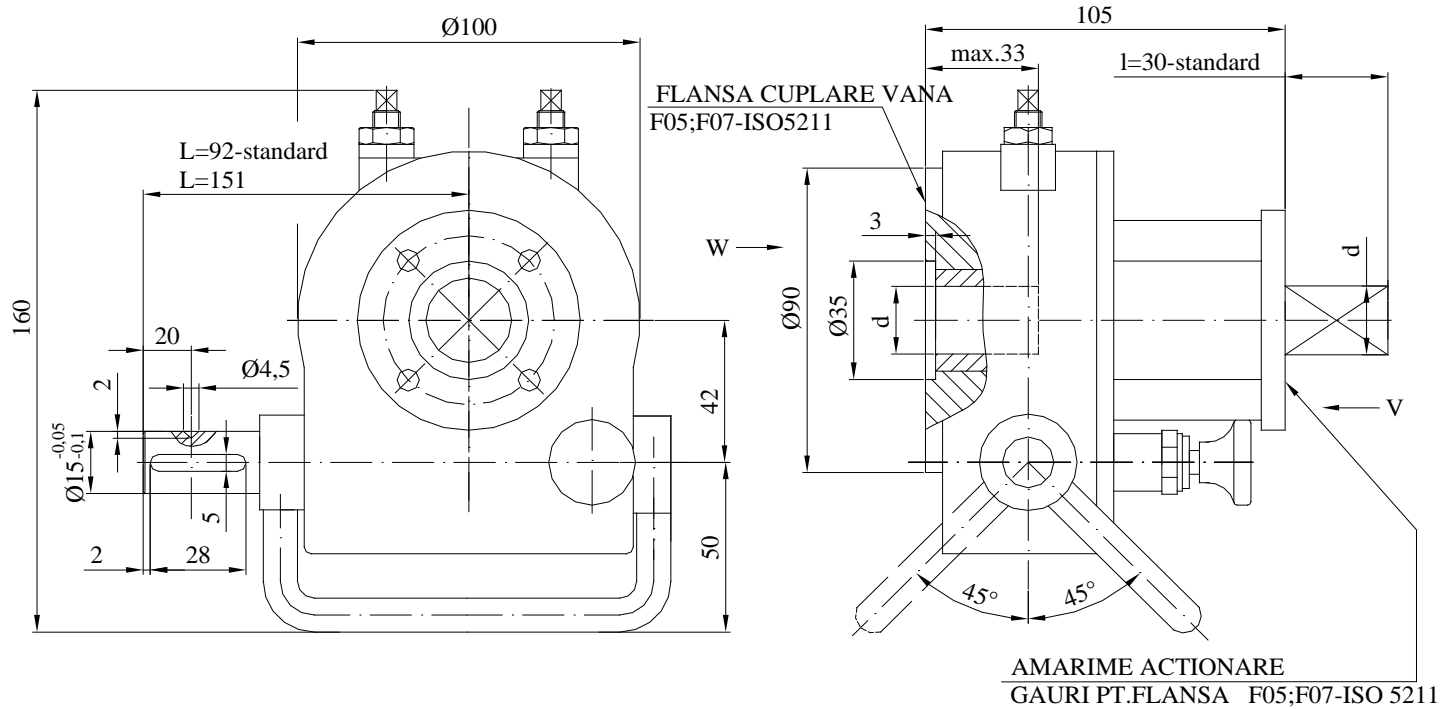
**SIMBOLIZARE:**



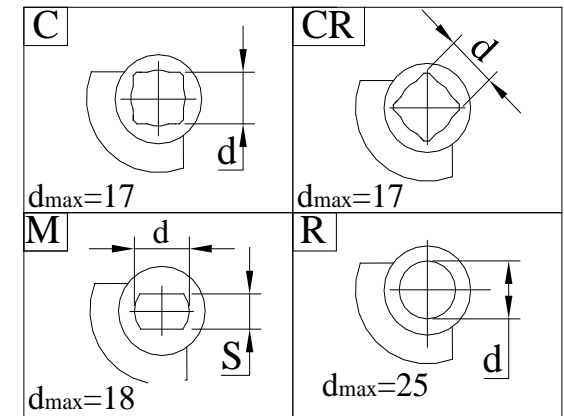
# REDUCTOR MANUAL DEBRAIABIL PENTRU ARMATURI "SFERT DE TURA"-ACTIONARE RMD 0A



Fisa nr.	614b
Data	05.03.2003



Vedere "V";"W"  
Forma cuplare Pozitia "inchis"



Roata de mana,aluminium - 140-standard  
Se comanda separat!

## CARACTERISTICI TEHNICE:

Moment iesire.....	125 Nm
Moment intrare.....	8,8 Nm
Raport.....	41
Cursa unghiulara,iesire.....	90 5
Nr.rotatii,roata de mana pt. o cursa completa.....	10,25
Grad de protectie mecanica.....	IP 65

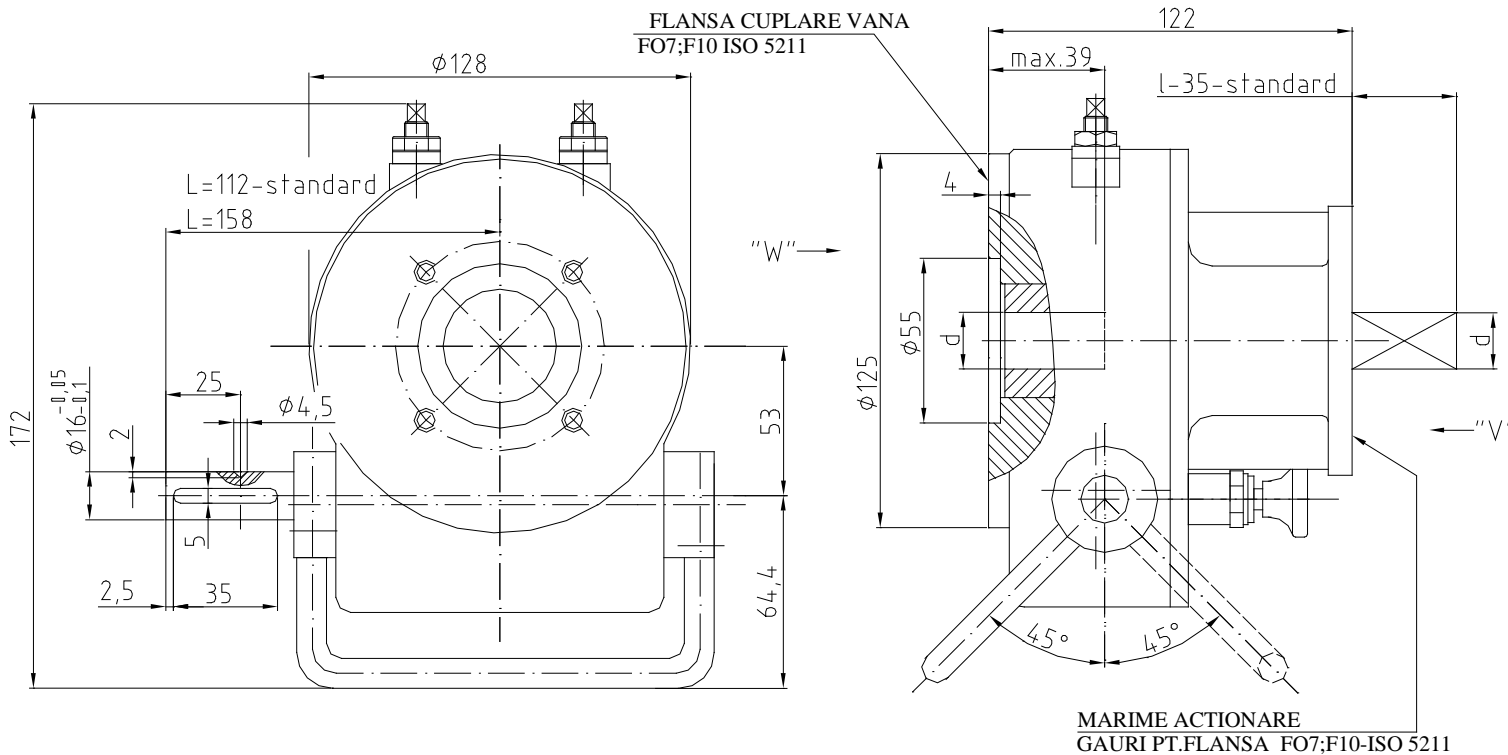
## SIMBOLIZARE:

<b>RMD-0A</b>	x	<b>F07</b>	-	<b>C15</b>	/	<b>F05</b>	-	<b>C15</b>	x	<b>30</b>	-	<b>92</b>
Tip										L-lungime arbore		
Flansa cuplare vana ISO 5211										I-Lungime antrenor		
d-Dimensiune cuplare vana										d-Dimensiune cuplare-actionare		
										Forma cuplare-actionare ISO 5211		

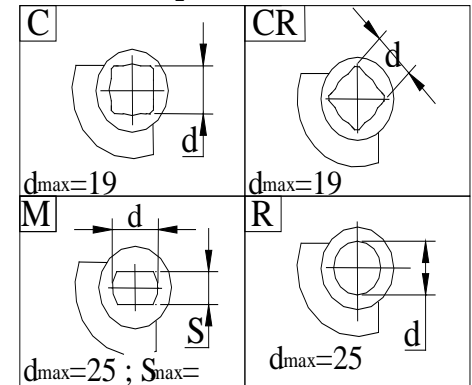
# REDUCTOR MANUAL DEBRAIABIL PENTRU ARMATURI "SFERT DE TURA"-ACTIONARE RMD 1A



Fisa nr.	615b
Data	05.03.2003



**Vedere "V";"W"**  
**Forma cuplare Pozitia "inchis"**

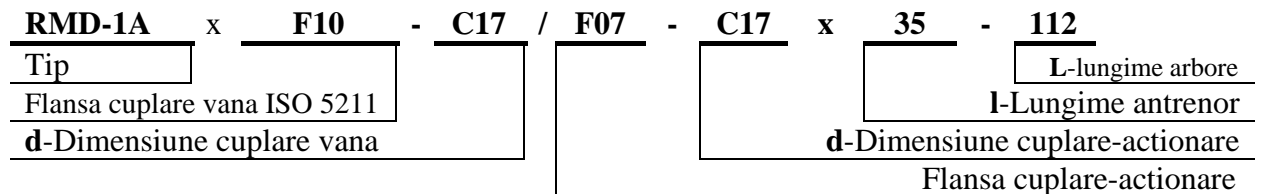


Roata de mana,aluminiumu Ø225-Standard  
*Se comanda separat!*

### CARACTERISTICI TEHNICE:

Moment iesire.....	270 Nm
Moment intrare.....	22,5 Nm
Raport.....	40
Cursa unghiulara,iesire.....	90 5
Nr.rotatii,roata de mana pt.o cursa completa.....	10
Grad de protectie mecanica.....	IP 65

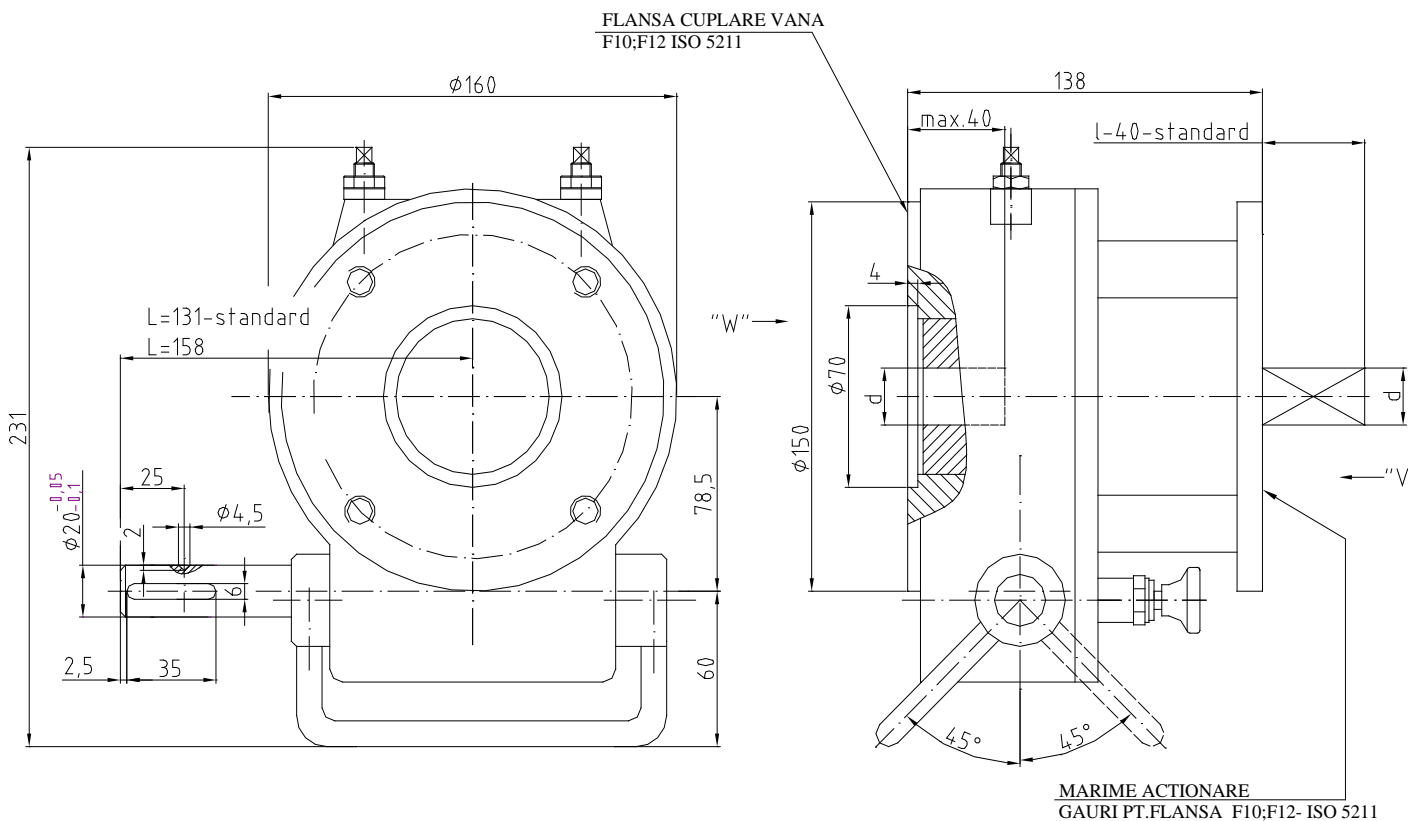
### SIMBOLIZARE:



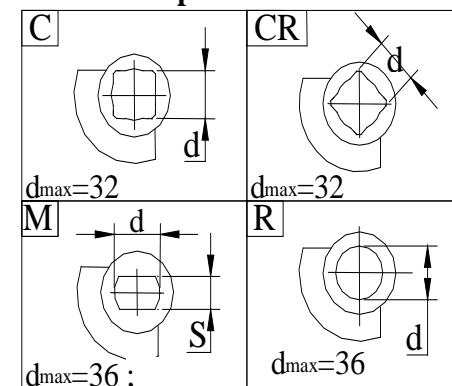
# REDUCTOR MANUAL DEBRAIABIL PENTRU ARMATURI "SFERT DE TURA" RMD 2A



Fisa nr.	616b
Data	05.03.2003



Vedere "V";"W"  
Forma cuplare Pozitia "inchis"



Roata de mana,aluminiu  $\phi 225$ -Standard  
Se comanda separat!

## CARACTERISTICI TEHNICE:

Moment iesire.....	800 Nm
Moment intrare.....	55 Nm
Raport.....	48
Cursa	
unghiulara,iesire.....	90 5
Nr.rotatii,roata de mana pt.o cursa completa.....	10,25
Grad de protectie mecanica.....	IP 65
Materiale conf specificatie	128

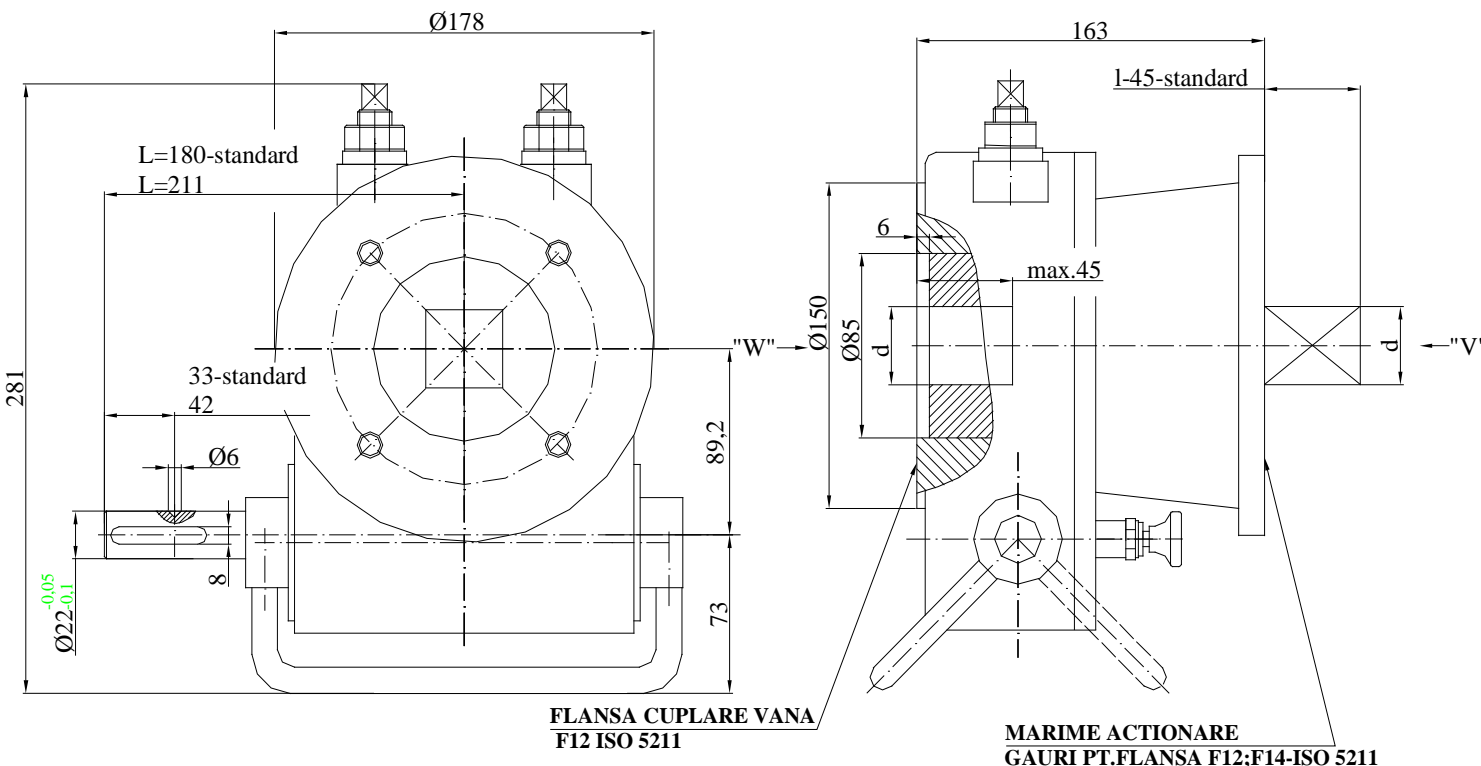
## SIMBOLIZARE:

<b>RMD-2A</b>	x	<b>F12</b>	-	<b>C25</b>	/	<b>F10</b>	-	<b>C25</b>	x	<b>40</b>	-	<b>131</b>
Tip										L-lungime arbore		
Flansa cuplare vana ISO 5211										I-lungime antrenor		
d-Dimensiune cuplare vana										d-Dimensiune cuplare-actionare		
										Flansa cuplare-actionare ISO 5211		

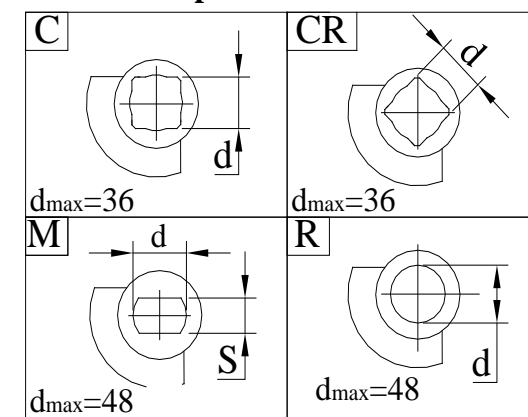
# REDUCTOR MANUAL DEBRAIABIL PENTRU ARMATURI "SFERT DE TURA"-ACTIONARE RMD 3A



Fisat nr.	617b
Data	05.03.2003



Vedere "V"; "W"  
Forma cuplare Pozitia "inchis"



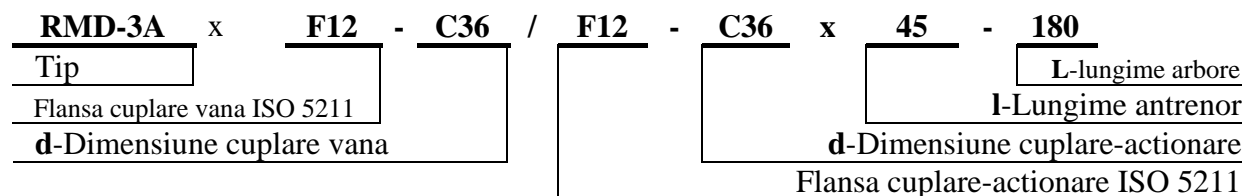
Roata de mana - A450-standard;  
-A350

*Se comanda separat!*

## CARACTERISTICI TEHNICE:

Moment iesire.....1150 Nm  
 Moment intrare.....75 Nm  
 Raport.....49  
 Cursa  
 unghiulara,iesire.....90 5  
 Nr.rotatii,roata de mana,pt.o cursa completa.....10.25  
 Grad de protectie mecanica.....IP 65

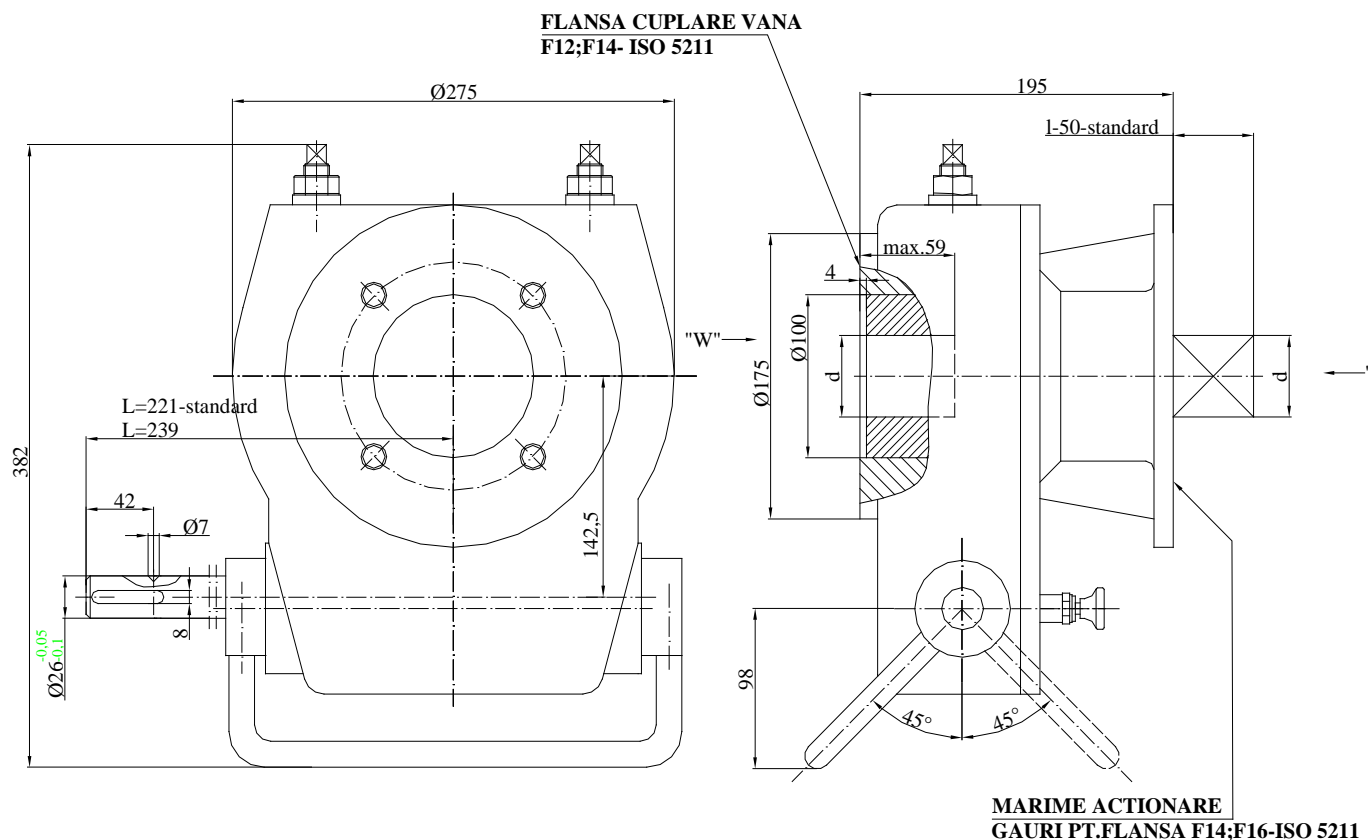
## SIMBOLIZARE:



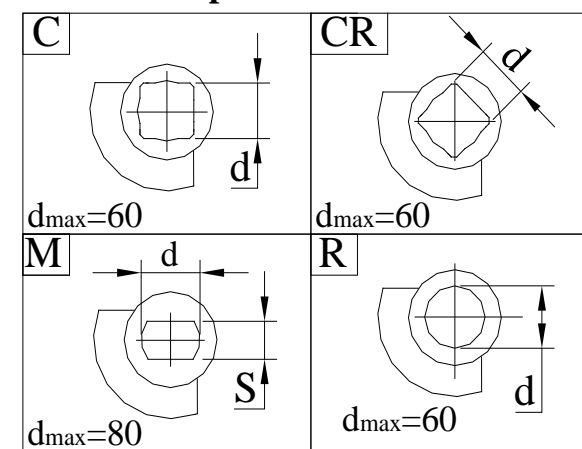
# REDUCTOR MANUAL DEBRAIABIL PENTRU ARMATURI "SFERT DE TURA"-ACTIONARE RMD 4A



Fisa nr.	618b
Data	05.03.2003



Vedere "V";"W"  
Forma cuplare Pozitia "inchis"



Roata de mana - A600-standard  
Se comanda separat!

## CARACTERISTICI TEHNICE:

Moment iesire.....	2500 Nm
Moment intrare.....	190 Nm
Raport.....	44
Cursa unghiulara,iesire.....	90 5
Nr.rotatii,roata de mana pt.o cursa completa...11	
Grad de protectie mecanica.....	IP 65
Materiale conf.specificatie.....	128

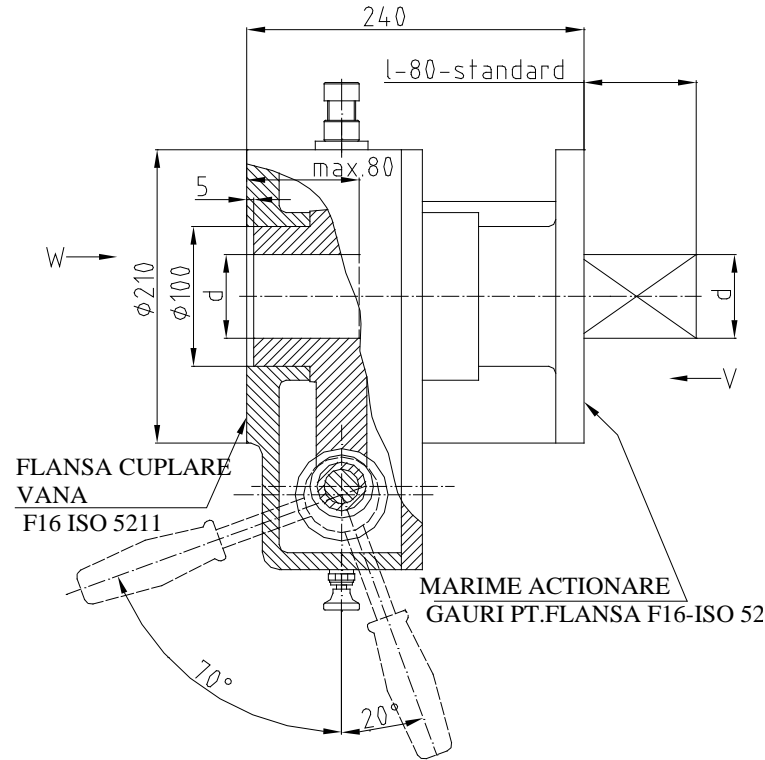
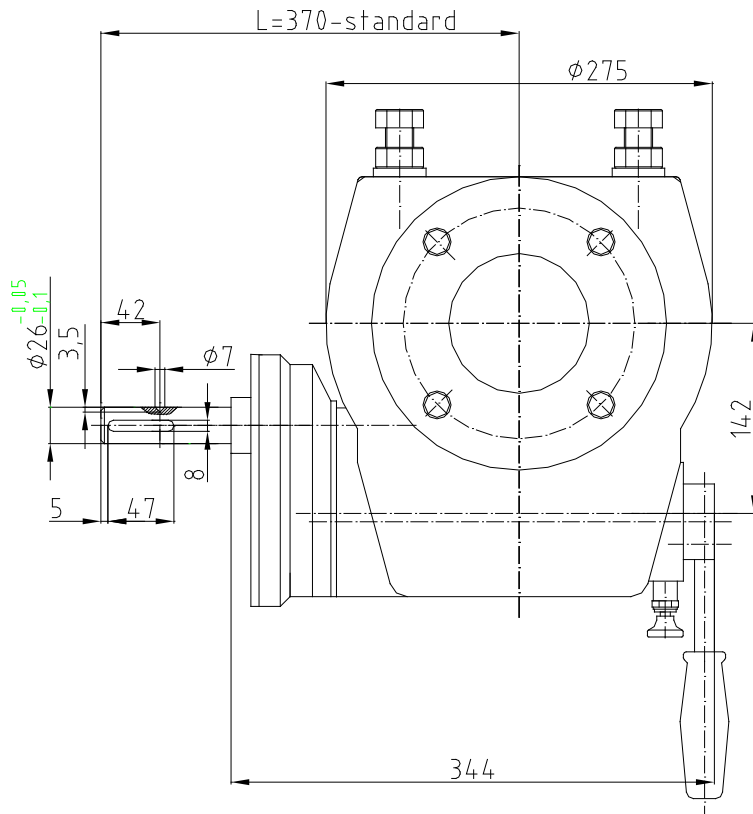
## SIMBOLIZARE:

<b>RMD-4A</b>	x	<b>F14</b>	-	<b>C50</b>	/	<b>F14</b>	-	<b>C50</b>	x	<b>55</b>	-	<b>221</b>
Tip										L-lungime arbore		
Flansa cuplare vana ISO 5211										l-lungime antrenor		
d-Dimensiune cuplare vana										d-Dimensiune cuplare-actionare		
										Flansa cuplare-actionare ISO 5211		

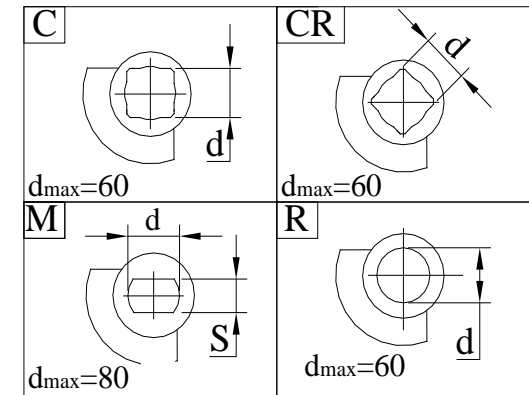
# REDUCTOR MANUAL DEBRAIABIL PENTRU ARMATURI "SFERT DE TURA"-ACTIONARE RMD 5



Fisa nr.	619b
Data	05.03.2003



Vedere "V"; "W"  
Forma cuplare Pozitia "inchis"



Roata de mana - A600  
Se comanda separat!

## CARACTERISTICI TEHNICE:

Moment iesire.....	4000 Nm
Moment intrare.....	104 Nm
Raport.....	127,9
Cursa unghiulara,iesire.....	90 5
Nr.rotatii,roata de mana pt.o cursa completa.....	10.25
Grad de protectie mecanica.....	IP 65

## SIMBOLIZARE:

<b>RMD-5</b>	x	<b>F16</b>	-	<b>C60</b>	/	<b>F16</b>	-	<b>C60</b>	x	<b>80</b>	-	<b>370</b>
Tip		Flansa cuplare vana								L-Lungime arbore		
		d-Dimensiune cuplare vana								l-lungime antrenor		
										d-Dimensiune cuplare-actionare		
										Flansa cuplare-actionare ISO 5211		

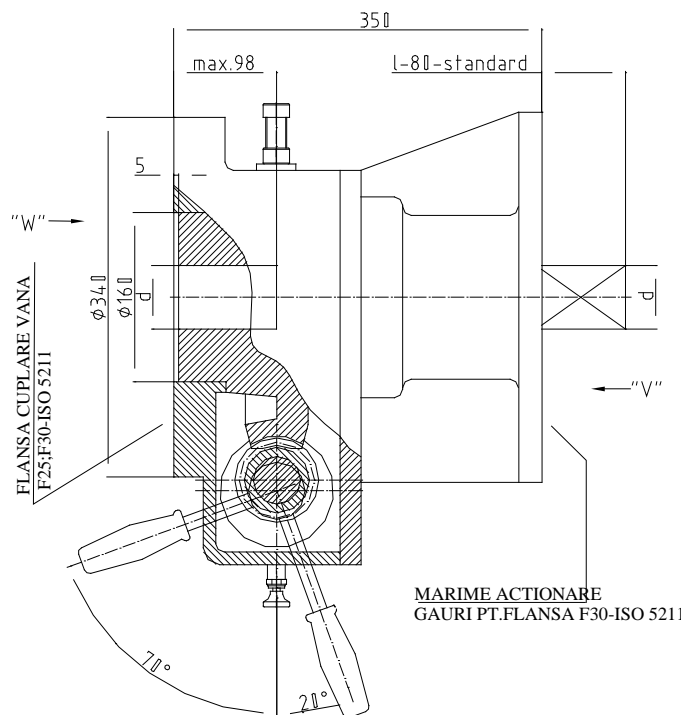
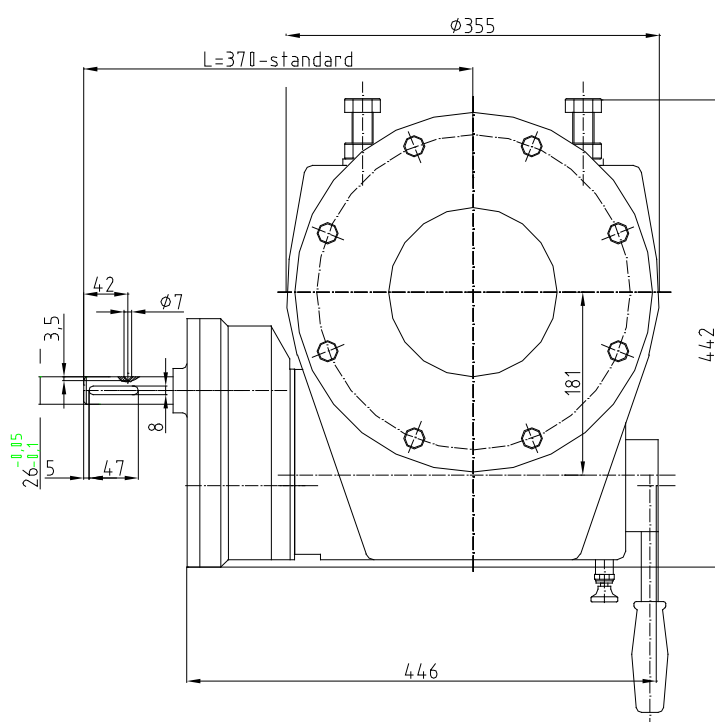




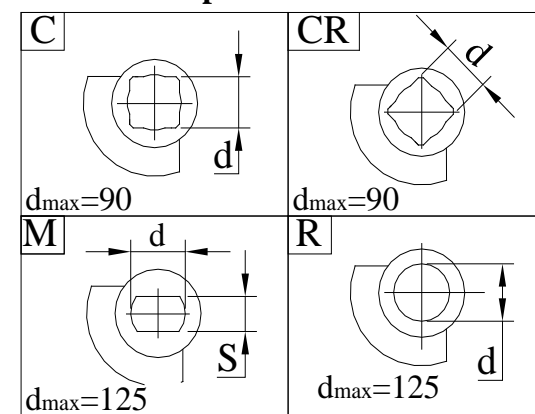
# REDUCTOR MANUAL DEBRAIABIL PENTRU ARMATURI "SFERT DE TURA" - ACTIONARE RMD 7



Fisa nr.	621b
Data	05.03.2003



Vedere "V"; "W"  
Forma cuplare Pozitia "inchis"



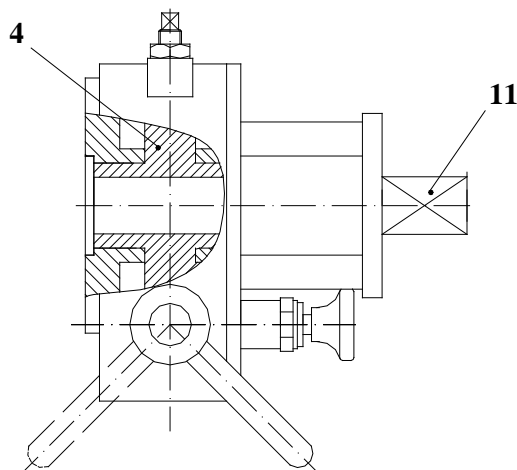
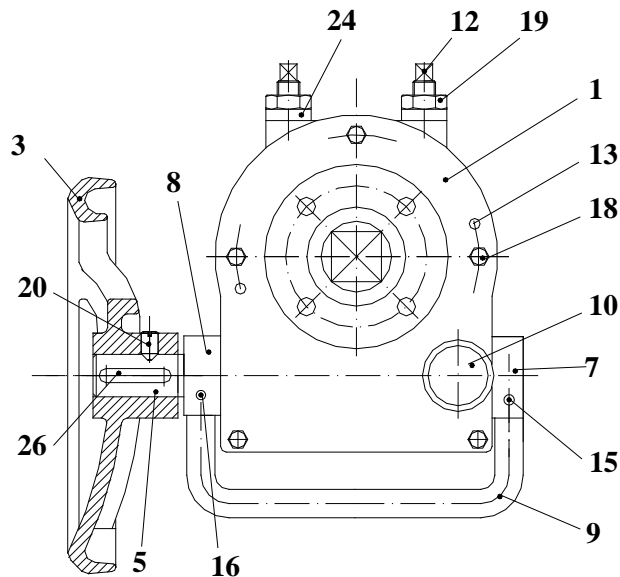
Roata de mana - A800  
Se comanda separat!

## CARACTERISTICI TEHNICE:

Moment iesire.....16000 Nm  
 Moment intrare..... 163 Nm  
 Raport.....379,5  
 Cursa unghiulara,iesire.....90 5  
 Nr.rotatii,roata de mana pt.o cursa completa.....10,25  
 Grad de protectie mecanica.....IP 65

## SIMBOLIZARE:

<b>RMD-7</b>	x	<b>F30</b>	-	<b>C70</b>	/	<b>F30</b>	-	<b>C70</b>	x	<b>80</b>	-	<b>370</b>
Tip												L-lungime arbore
Flansa cuplare vana ISO 5211												I-lungime antrenor
<b>d</b> -Dimensiune cuplare vana												<b>d</b> -Dimensiune cuplare - actionare
												Flansa cuplare-actionare ISO 5211



**SPECIFICATIE Sp-128**  
**CU MATERIALE UTILIZATE LA REDUCTOARE**  
**MANUALE DEBRAIABILE PENTRU ARMATURI**  
**“SFERT DE TURA”-ACTIONARE**  
**RMD –MARIME 0,1,2,3 SI 4**

Nr	Descriere	Variants					
		RMD-A-Standard		RMD-M		RMD-B	
		Material	Specificatie	Material	Specificatie	Material	Specificatie
1	Carcasa	Fonta cenusie	GG-25-DIN 1691	Fonta cenusie	GG-25-DIN 1691	Fonta cenusie	GG-25-DIN 1691
3	Roata de mana	Aluminiu-GAlSi10Mg-DIN1725-marime 0,1,2	Aluminiu-GAlSi10Mg-DIN1725-marime 0,1,2	Aluminiu-GAlSi10Mg-DIN1725-marime 0,1,2	Aluminiu-GAlSi10Mg-DIN1725-marime 0,1,2	Aluminiu-GAlSi10Mg-DIN1725-marime 0,1,2	Aluminiu-GAlSi10Mg-DIN1725-marime 0,1,2
		Otel sudat -St50.2-DIN17100-marime 3, 4	Otel sudat -St50.2-DIN17100-marime 3, 4	Otel sudat -St50.2-DIN17100-marime 3, 4	Otel sudat -St50.2-DIN17100-marime 3, 4	Otel sudat -St50.2-DIN17100-marime 3, 4	Otel sudat -St50.2-DIN17100-marime 3, 4
4	Roata melcata	Fonta nodulara	GGG40-DIN1693	Fonta nodulara	GGG40-DIN1693	Fonta nodulara	GGG40-DIN1693
5	Arbore melcat	<b>Otel inox.</b>	<b>X20Cr13-DIN17440</b>	<b>Otel inox. A4</b>	<b>X5CrNiMo17-12-2/AISI 316</b>	<b>Otel inox.</b>	<b>X20Cr13-DIN17440</b>
7	Bucsa	Bronz-CuSn6	DIN17662	Bronz-CuSn6	DIN17662	<b>Otel inox. A4</b>	<b>X5CrNiMo17-12-2/AISI 316</b>
8	Bucsa	Bronz-CuSn6	DIN17662	Bronz-CuSn6	DIN17662	<b>Otel inox. A4</b>	<b>X5CrNiMo17-12-2/AISI 316</b>
9	Parghie cuplare-decuplare	Otel-Zn	St50.2-DIN17100	<b>Otel inox. A4</b>	<b>X5CrNiMo17-12-2/AISI 316</b>	Otel-Zn	St50.2-DIN17100
10	Surub blocare	<b>Otel inox.</b>	<b>X20Cr13-DIN17440</b>	<b>Otel inox. A4</b>	<b>X5CrNiMo17-12-2/AISI 316</b>	<b>Otel inox.</b>	<b>X20Cr13-DIN17440</b>
11	Antrenor	<b>Otel inox.</b>	<b>X20Cr13-DIN17440</b>	<b>Otel inox.</b>	<b>X20Cr13-DIN17440</b>	<b>Otel inox.</b>	<b>X20Cr13-DIN17440</b>
12	Stift reglare cursa	Otel-Zn	41Cr4-DIN17200	<b>Otel inox. A4</b>	<b>X5CrNiMo17-12-2/AISI 316</b>	Otel-Zn	41Cr4-DIN17200
13	Stift cilindric	<b>Otel inox.</b>	<b>X20Cr13-DIN17440</b>	<b>Otel inox. A4</b>	<b>X5CrNiMo17-12-2/AISI 316</b>	<b>Otel inox.</b>	<b>X20Cr13-DIN17440</b>
15	Stift cilindric	<b>Otel inox.</b>	<b>X20Cr13-DIN17440</b>	<b>Otel inox. A4</b>	<b>X5CrNiMo17-12-2/AISI 316</b>	<b>Otel inox.</b>	<b>X20Cr13-DIN17440</b>
16	Stift cilindric	<b>Otel inox.</b>	<b>X20Cr13-DIN17440</b>	<b>Otel inox. A4</b>	<b>X5CrNiMo17-12-2/AISI 316</b>	<b>Otel inox.</b>	<b>X20Cr13-DIN17440</b>
18	Suruburi	Otel-Zn	Gr8.8-DIN916	<b>Otel inox. A4</b>	<b>X5CrNiMo17-12-2/AISI 316</b>	Otel-Zn	Gr8.8-DIN916
19	Piulita	Otel-Zn	Gr8-DIN916	<b>Otel inox. A4</b>	<b>X5CrNiMo17-12-2/AISI 316</b>	Otel-Zn	Gr8-DIN916
20	Stift filetat	<b>Otel inox.</b>	<b>X20Cr13-DIN17440</b>	<b>Otel inox. A4</b>	<b>X5CrNiMo17-12-2/AISI 316</b>	<b>Otel inox.</b>	<b>X20Cr13-DIN17440</b>
24	Rondela	Plastic	Plastic	Plastic	Plastic	Plastic	Plastic
26	Pana paralela	Otel	St60-DIN17100	<b>Otel inox. A4</b>	<b>X5CrNiMo17-12-2/AISI 316</b>	Otel	St60-DIN17100
	Inele “O”	Cauciuc nitrilic	Nitrile-DIN 3771	Cauciuc nitrilic	Nitrile-DIN 3771	Cauciuc nitrilic	Nitrile-DIN 3771